

10

EN 7/10/1988

ROS 9/198 Lewis County Auditor AFN 1045134

ASED

WALOICE
PINES

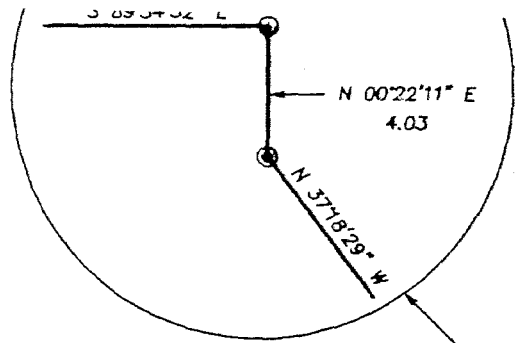
5'27" E 10.00

333' 354.31

ENGINEER'S STA NON 40+42.30
N 89°53'33" E 289.86

BASIS OF BEAINGS ON E-W
MID-SECTION UNE
AS- BUILT AND CONSTRUCTED
CENTERLINE OF MAURIN ROAD 2nd Ext.

EDURE



DIRECTION OF FLOW
APPROXIMATE
LOCATION OF DRAINAGE
EASEMENT DESCRIBED
IN AFN 760233

BEZY

POND

POND

McBRIDE COURT
(PRIVATE ROAD)

EXISTING DRAINAGE DITCH

MENASHA

CENTERLINE OF ROAD AND
AS PER DESIGN AND CONS

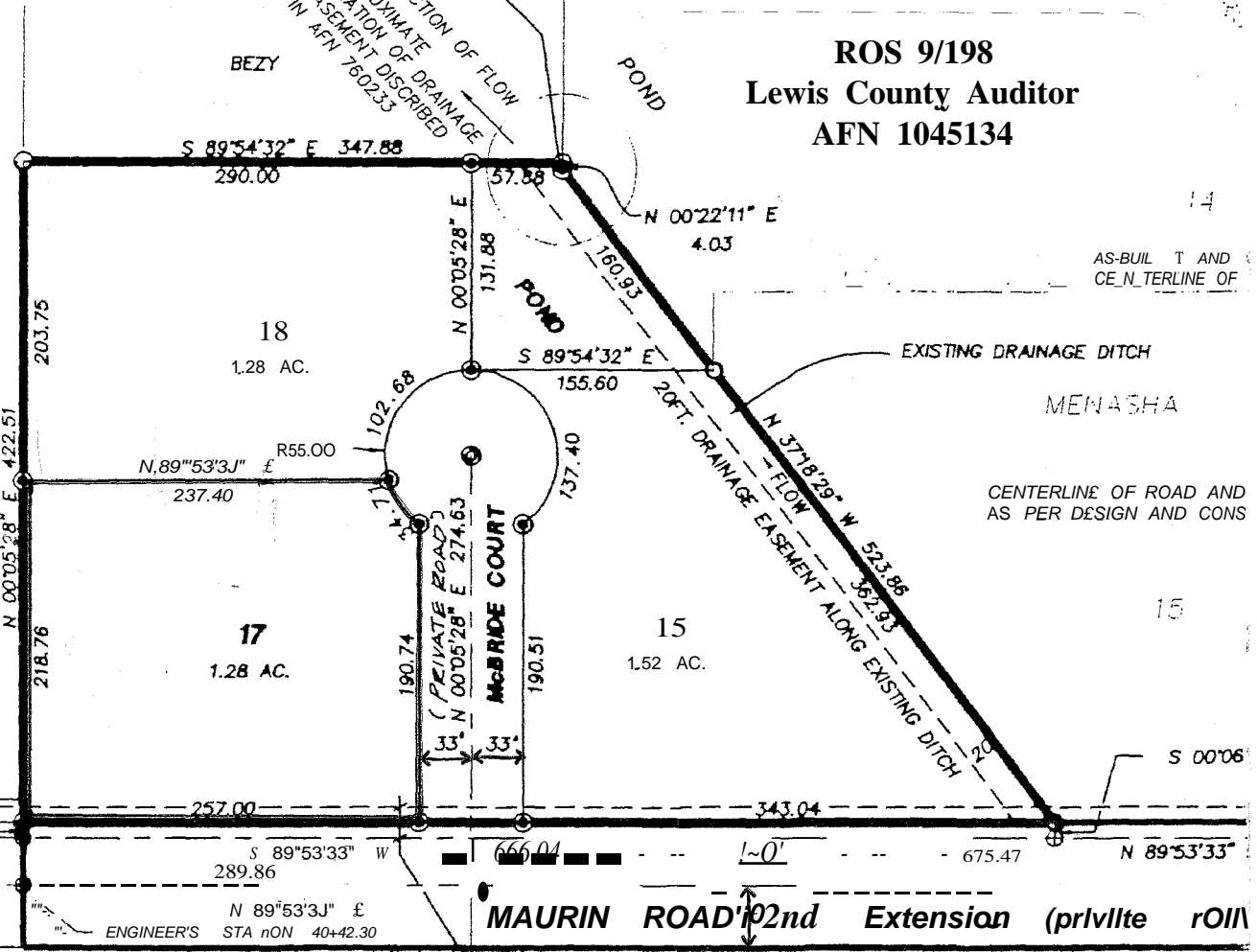
15

MAURIN ROAD 2nd Extension (private road)

Underground
20' EASEMENT FOR ELECTRICAL
POWER TO P.U.D. OF LEWIS CO. (NOT RECORDED)
EASEMENT TO THE CITY OF CHEHALIS
FOR UTILITY PURPOSES AFN 3004171
WITHIN ALL OF 80 FOOT STRIP
DESIGNATED AS MAURIN ROAD 2ND EXT.

DIRECTION OF FLOW
APPROXIMATE
LOCATION OF DRAINAGE
EASEMENT DESCRIBED
IN AFN 760233

DEVELOPMENT



18
1.28 AC.
S 89°54'32" E 347.88
290.00
N 00°22'11" E 4.03
N 00°05'28" E 131.88
160.93
N 00°22'11" E 4.03
S 89°54'32" E 155.60
20 FT. DRAINAGE EASEMENT ALONG EXISTING DITCH
N 37°18'29" W 523.86
362.93
15
1.52 AC.
N 00°05'28" E 422.51
203.75
N 89°53'33" E 237.40
R55.00
N 89°53'33" E 274.63
102.68
137.40
190.74
McBRIDE COURT
(PRIVATE ROAD)
N 00°05'28" E 190.51
190.51
S 89°53'33" W 257.00
343.04
S 00°06'
N 89°53'33" 675.47
666.04
1-0'